

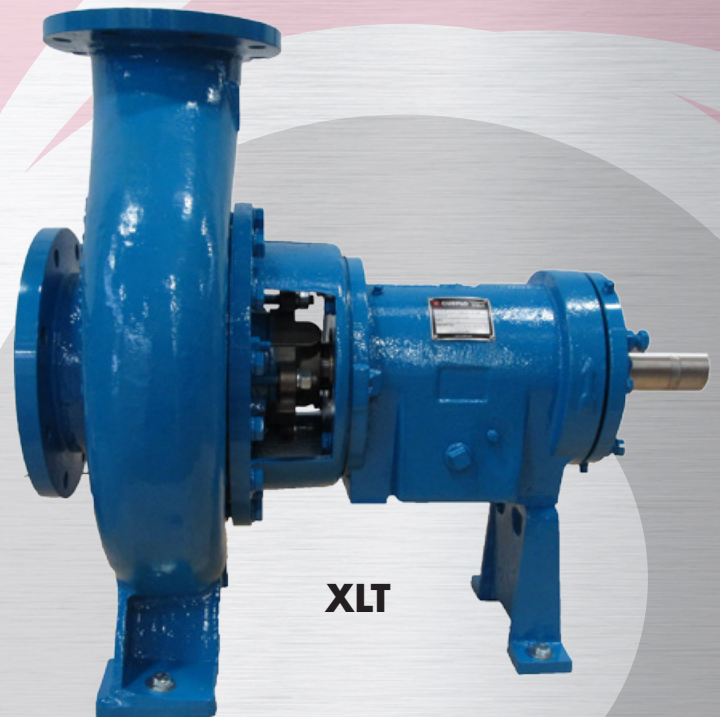
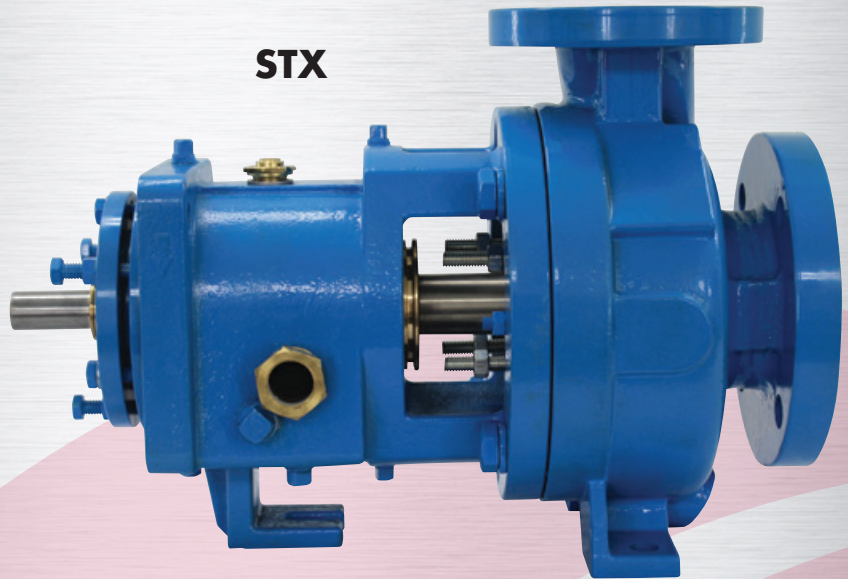


CURFLO

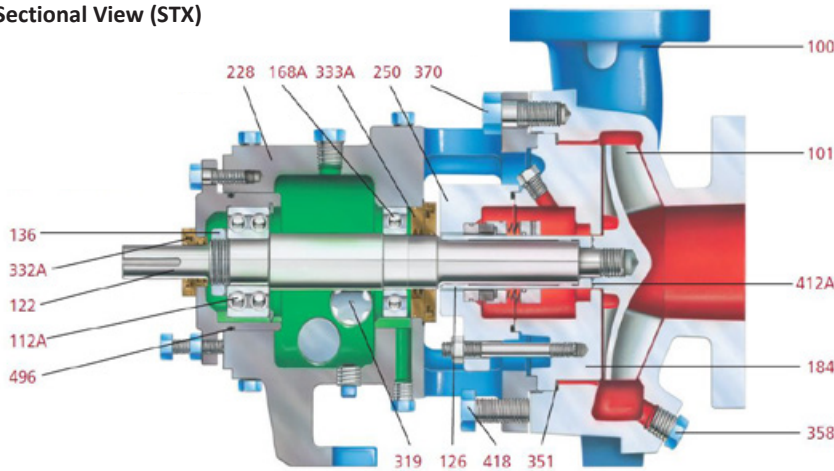
THE **RIGHT** PUMP. THE **RIGHT** SOLUTION.

G-Line Series

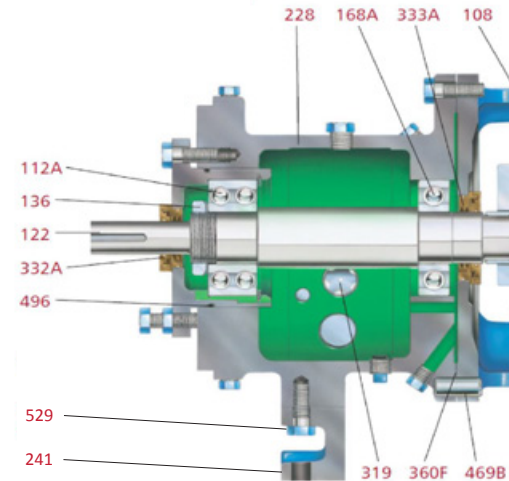
STX | MTX | XLT



Sectional View (STX)



Sectional View (MTX)

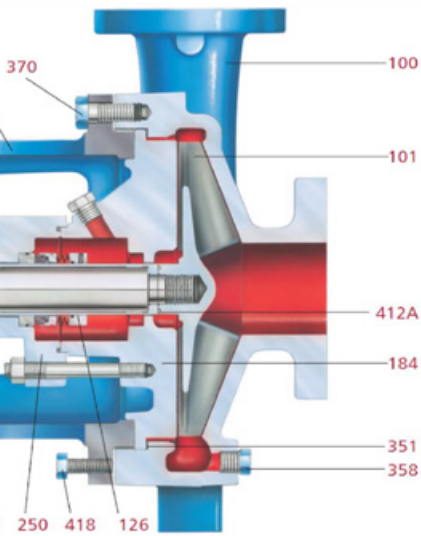


Specifications

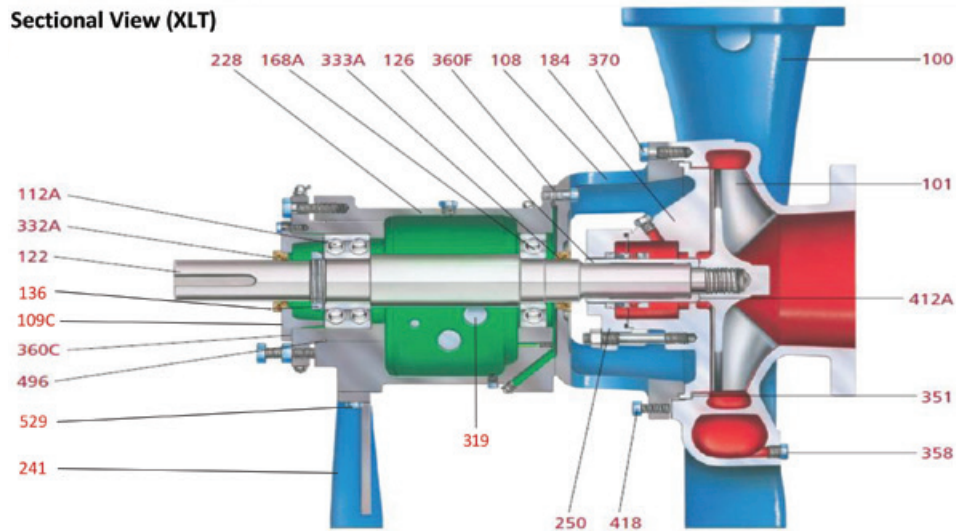
- Manufactured to meet ANSI/ASME B73.1 standard
- Inpro bearing isolators
- SKF bearings
- Standard, large and modified seal chambers
- Multiple materials of construction available (Carbon Steel, 316SS, CD4, Alloy 20, Hast B, Hast C)
- Open impeller design
- 100% interchangeable with Goulds 3196
- STX, MTX, and XLT models

PARTS LIST & MATERIALS OF CONSTRUCTION

ITEM NUMBER	PART NAME	MATERIAL			
		WCB	316SS	CD4MCU	ALLOY 20
100	Casing	WCB	CD4MCu		Alloy 20*
101	Impeller	WCB	CD4MCu		Alloy 20*
108	Frame Adapter		WCB		
109C	Cover, Bearing Outboard (XLT Only)		WCB		
112A	Thrust Bearing		Double Row Angular Contact		
122	Shaft-Less Sleeve (Optional)		316SS		Alloy 20*
122	Shaft-With Sleeve		SAE4140		Alloy 20*
126	Shaft Sleeve		316SS		Alloy 20*
136	Bearing Locknut & Lockwasher		Steel		
168A	Radial Bearing		Single Row Ball		
184	Seal Chamber/Stuffing Box Cover	WCB	316SS	CD4MCu	Alloy 20*
228	Bearing Frame		WCB		
241	Foot, Frame (MTX & XLT Only)		WCB		
250	Gland		316SS		Alloy 20*
319	Oil Sight Glass		Glass/Steel		
332A	INPRO Labyrinth Oil Seal (Outboard)		Bronze w/Viton O-Rings		
333A	INPRO Labyrinth Oil Seal (Inboard)		Bronze w/Viton O-Rings		
351	Casing Gasket		Teflon		
358	Casing Drain Plug (Optional)	WCB	316SS		304SS
360F	Gasket, Frame-to Adapter (MTX & XLT Only)		Vellumoid		
360C	Gasket, Bearing End Cover (XLT Only)		Vellumoid		
370	Bolt, Adapter-to-Case	WCB		304SS	
412A	O-Ring, Impeller		Teflon		
418	Jacking Bolt, Adapter-to Case		304SS		
469B	Dowel Pin, Frame-to Adapter		Steel		
496	O-Ring, Bearing Housing		Buna N		
529	Bolt, Frame Foot to Frame (MTX & XLT Only)		Grade 8		

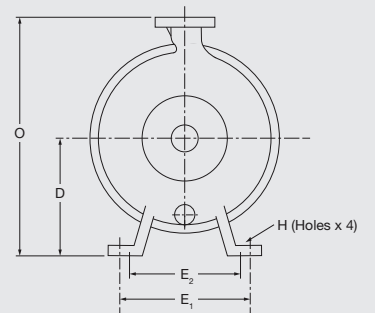
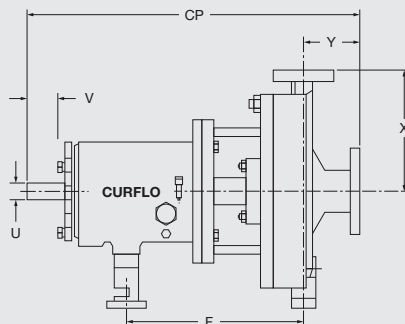


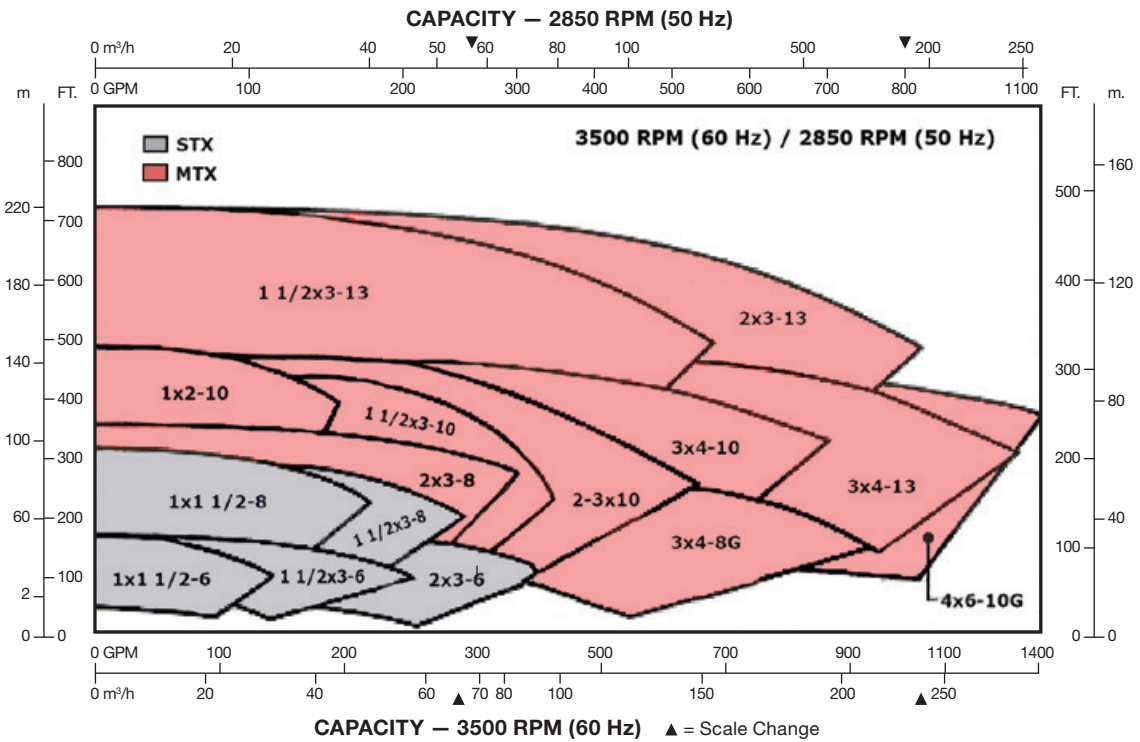
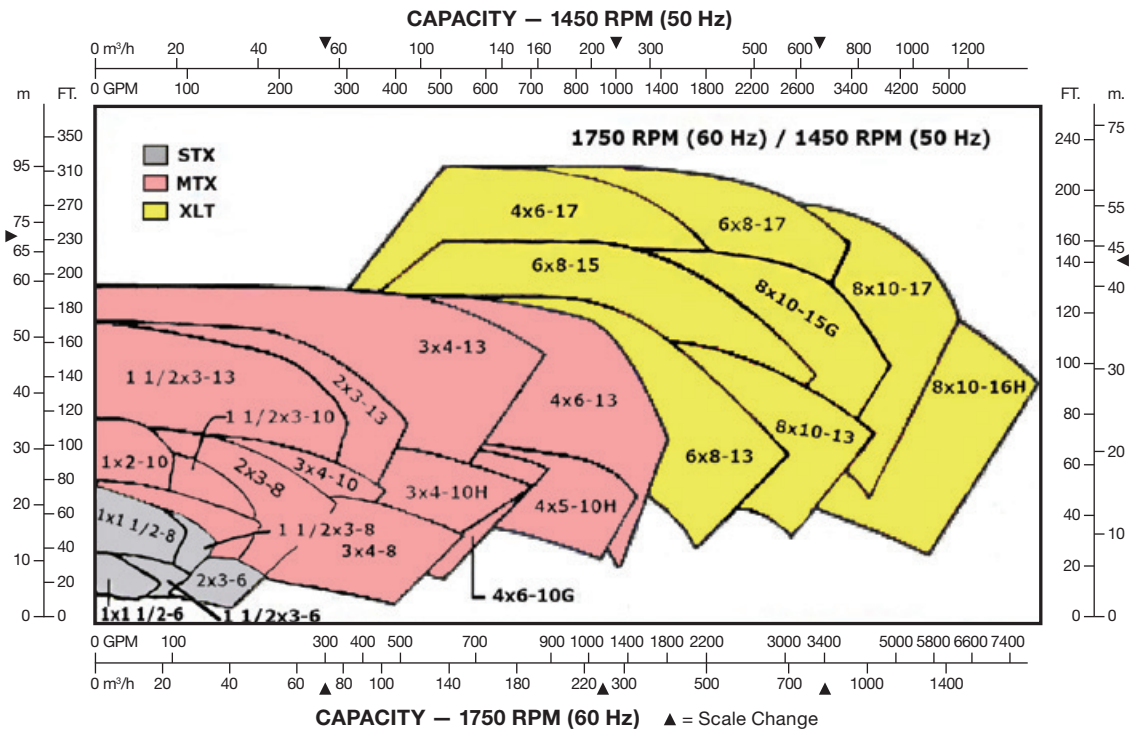
Sectional View (XLT)



	PUMP SIZE	DISCHARGE	SUCTION	CP	D	X	O	E ₁	E ₂	F	U	Y	V min.	H
STX	1x1.5-6	1	1.5	17.5	5.25	6.5	11.75	6	0	7.25	0.875	4	2	0.625
	1.5x3-6	1.5	3	17.5	5.25	6.5	11.75	6	0	7.25	0.875	4	2	0.625
	2x3-6	2	3	17.5	5.25	6.5	11.75	6	0	7.25	0.875	4	2	0.625
	1x1.5-8	1	1.5	17.5	5.25	6.5	11.75	6	0	7.25	0.875	4	2	0.625
	1.5x3-8	1.5	3	17.5	5.25	6.5	11.75	6	0	7.25	0.875	4	2	0.625
MTX	2x3-8	2	3	23.5	8.25	9.5	17.75	9.75	7.25	12.5	1.125	4	2.625	0.625
	3x4-8	3	4	23.5	8.25	11	19.25	9.75	7.25	12.5	1.125	4	2.625	0.625
	3x4-8G	3	4	23.5	8.25	11	19.25	9.75	7.25	12.5	1.125	4	2.625	0.625
	1x2-10	1	2	23.5	8.25	8.5	16.75	9.75	7.25	12.5	1.125	4	2.625	0.625
	1.5x3-10	1.5	3	23.5	8.25	8.5	16.75	9.75	7.25	12.5	1.125	4	2.625	0.625
	2x3-10	2	3	23.5	8.25	9.5	17.75	9.75	7.25	12.5	1.125	4	2.625	0.625
	3x4-10	3	4	23.5	8.25	11	19.25	9.75	7.25	12.5	1.125	4	2.625	0.625
	3x4-10H	3	4	23.5	10	12.5	22.50	9.75	7.25	12.5	1.125	4	2.625	0.625
	4x6-10G	4	6	23.5	10	13.5	23.50	9.75	7.25	12.5	1.125	4	2.625	0.625
	4x6-10H	4	6	23.5	10	13.5	23.50	9.75	7.25	12.5	1.125	4	2.625	0.625
	1.5x3-13	1.5	3	23.5	10	10.5	20.50	9.75	7.25	12.5	1.125	4	2.625	0.625
	2x3-13	2	3	23.5	10	11.5	21.50	9.75	7.25	12.5	1.125	4	2.625	0.625
	3x4-13	3	4	23.5	10	12.5	22.50	9.75	7.25	12.5	1.125	4	2.625	0.625
	4x6-13	4	6	23.5	10	13.5	23.50	9.75	7.25	12.5	1.125	4	2.625	0.625
XLT	6x8-13	6	8	33.875	14.5	16	30.5	16	9	18.75	2.375	6	4	0.875
	8x10-13	8	10	33.875	14.5	18	32.5	16	9	18.75	2.375	6	4	0.875
	6x8-15	6	8	33.875	14.5	18	32.5	16	9	18.75	2.375	6	4	0.875
	8x10-15	8	10	33.875	14.5	18	32.5	16	9	18.75	2.375	6	4	0.875
	8x10-15G	8	10	33.875	14.5	19	33.5	16	9	18.75	2.375	6	4	0.875

G-Line Dimensional Drawing (STX/MTX/XLT)





1113 Howard Avenue,
Houston, TX 77536
281.479.5000
Sales@CURFLO.com
www.CURFLO.com



AUTHORIZED DISTRIBUTOR