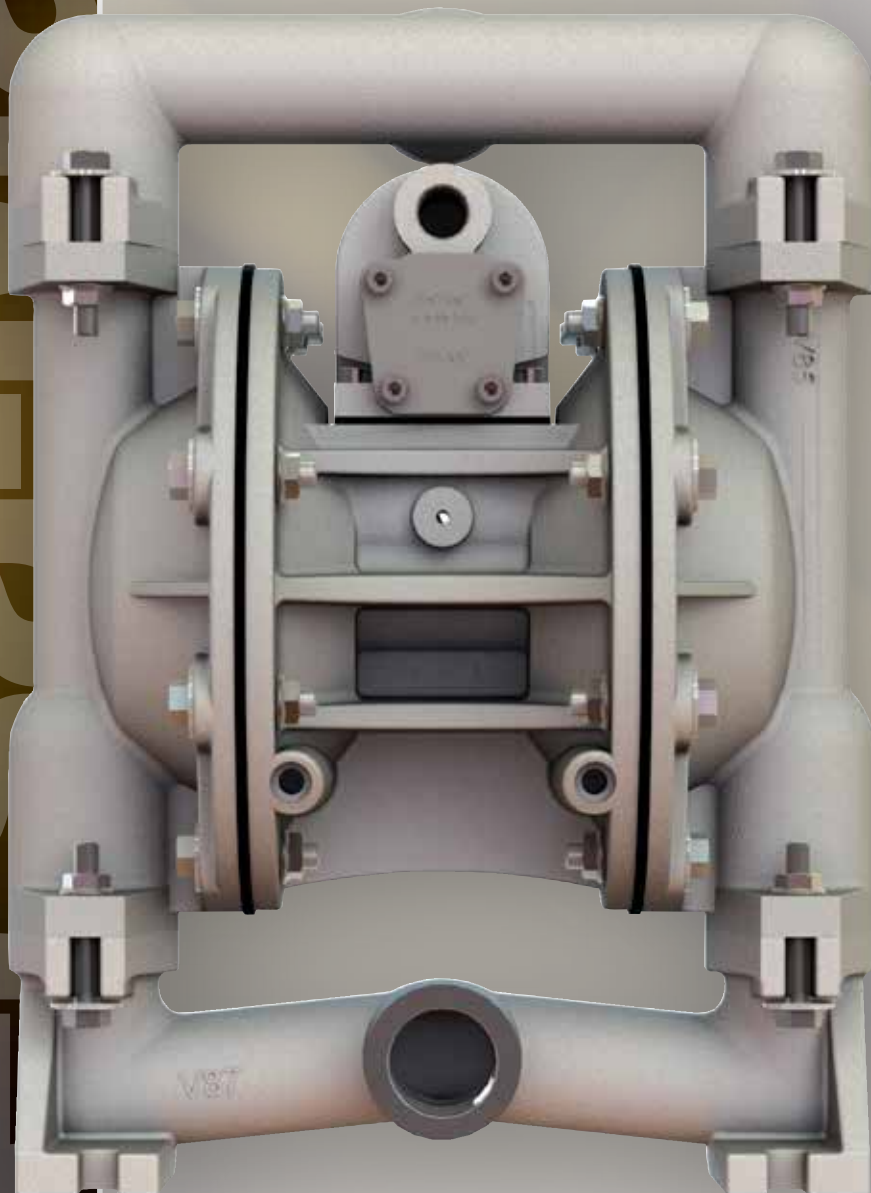


1" (25.4 mm) Metallic Bolted

**E1**

# **VERSA-MATIC® E1**

Experience Superior Performance



## Multiple Porting Options

Top, side and end porting for both inlet and discharge

## Shoe Valve Technology

On / Off / On reliability, with no costly air blow-by for excellent air efficiency

## Available Materials

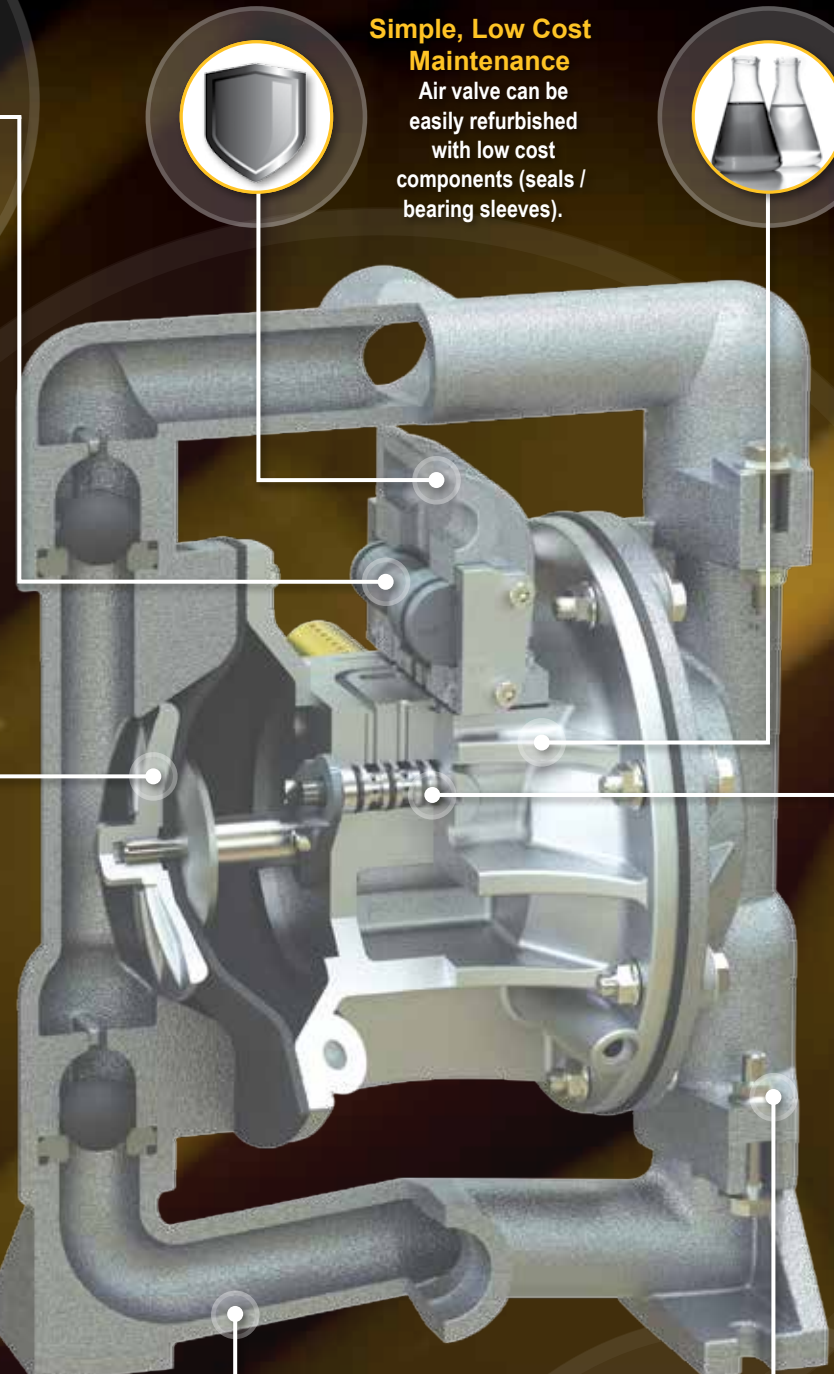
Aluminum  
Stainless Steel  
Hastelloy



# Features & Benefits

E1 1" Metallic Bolted

E1



### Exclusive Elima-Matic Air Valve System

Unbalanced air valve delivers unsurpassed On / Off / On reliability.



### Simple, Low Cost Maintenance

Air valve can be easily refurbished with low cost components (seals / bearing sleeves).



### Chemical Resistance

Air sections available in non-metallic or metallic construction materials. Protective coating options also available.



### Extended Life Diaphragms

Integrated Plate Bonded PTFE diaphragms. Ribbed backer, oversized integral plate, and deflection ridges extend flex life. No outer plates mean no leak path or plate abrasion.

VERSA-RUGGED diaphragms deliver reliability in a variety of rubber and thermoplastic materials.



### Long Term Reliability

Modular pilot assembly eliminates complexity, and ensures consistent performance after maintenance is performed.



### Leak-Free Bolted Construction

Bolted construction provides enhanced sealing capabilities when pumping thin liquids.

**FDA**  
COMPLIANT

### Hygienic FDA Option

Wetted Surface Finish (Internal / External):  
Standard: 150 μ-in (Ra 3.81 μ-m)



# Specifications

E1 1" Metallic Bolted

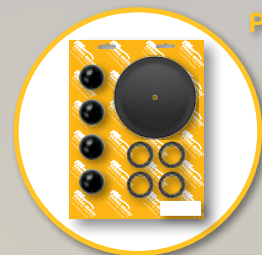
## Accessories / Kits:

Protect Your Investment and Increase Uptime



### Filter / Regulator

Clean dry air for optimum performance and longevity. Automatic drain for maintenance free operation.



### Parts Kits

Save time and money with compete parts kits. Repair it once, repair it right.

## Performance:

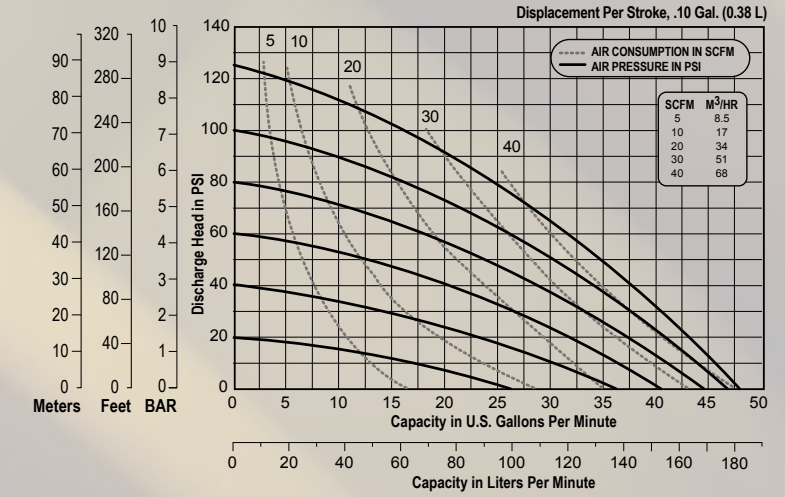
### E1 1" Bolted Metal Rubber and TPE Fitted

- Flow Rate**  
Adjustable to . . . . . 0-49 gpm (185.5 lpm)
- Port Size**  
Suction . . . . . 1" NPT (25.4 mm)  
Discharge . . . . . 1" NPT (25.4 mm)
- Air Inlet** . . . . . 3/8" NPT (9.5 mm)
- Air Exhaust** . . . . . 1/2" NPT (12.7 mm)
- Suction Lift**  
Dry . . . . . 15' (4.6 m)  
Wet . . . . . 31' (9.4 m)
- Max Solid Size (Diameter)** . . 1/8" (3.2 mm)
- Max Noise Level** . . . . . 91 dB(A)
- Shipping Weights**  
Aluminum . . . . . 27 lbs (12.2 kg)  
Stainless Steel . . . . . 40 lbs (18.1 kg)  
Alloy C . . . . . 40 lbs (18.1 kg)

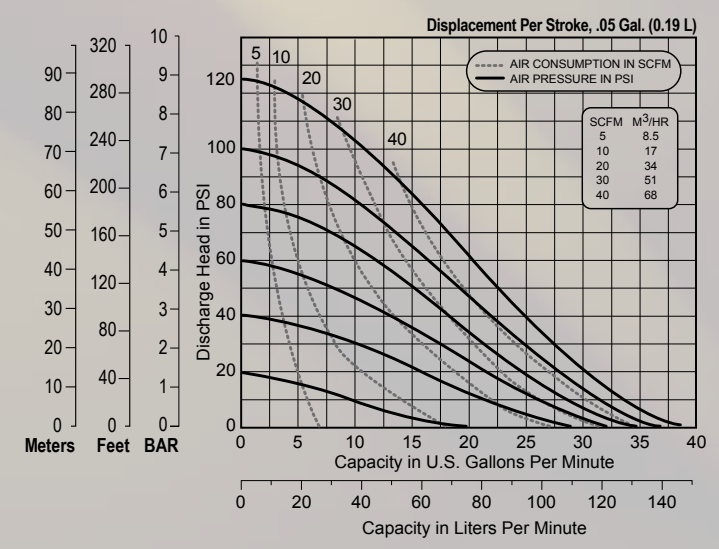
### E1 1" Bolted Metal PTFE Fitted

- Flow Rate**  
Adjustable to . . . . . 0-38 gpm (143.8 lpm)
- Port Size**  
Suction . . . . . 1" NPT (25.4 mm)  
Discharge . . . . . 1" NPT (25.4 mm)
- Air Inlet** . . . . . 3/8" NPT (9.5 mm)
- Air Exhaust** . . . . . 1/2" NPT (12.7 mm)
- Suction Lift**  
Dry . . . . . 8' (2.4 m)  
Wet . . . . . 31' (9.4 m)
- Max Solid Size (Diameter)** . . 1/8" (3.2 mm)
- Max Noise Level** . . . . . 95 dB(A)
- Shipping Weights**  
Aluminum . . . . . 27 lbs (12.2 kg)  
Stainless Steel . . . . . 40 lbs (18.1 kg)  
Alloy C . . . . . 40 lbs (18.1 kg)

## Curves:



NOTE: Performance based on the following: elastomeric fitted pump, flooded suction, water at ambient conditions. The use of other materials and varying hydraulic conditions may result in deviations in excess of 5%.

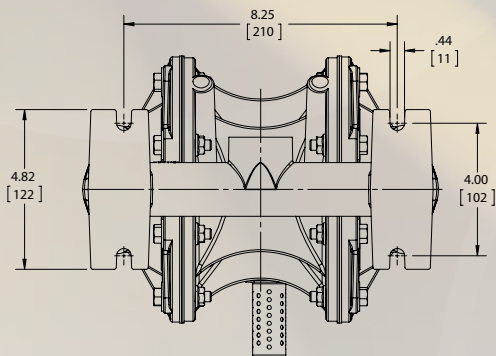
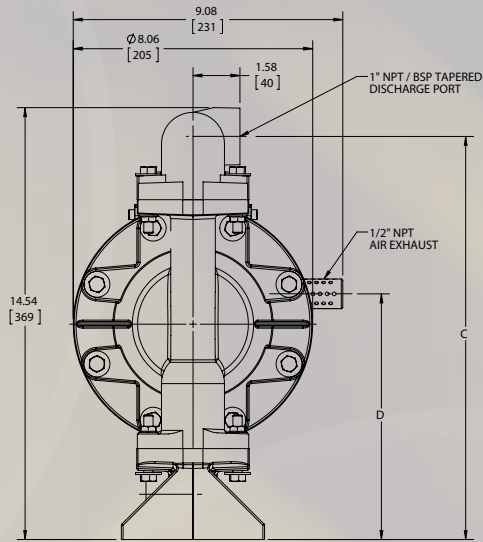
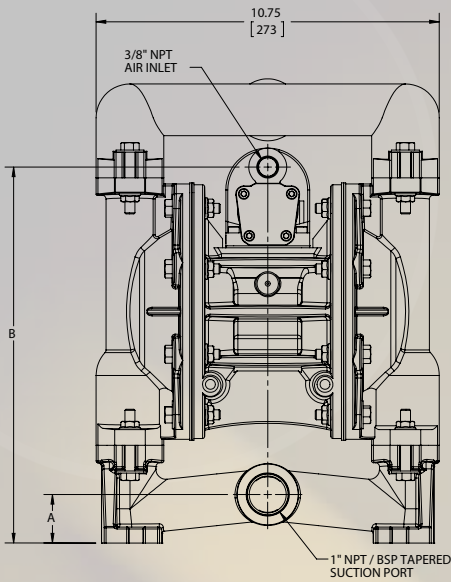


NOTE: Performance based on the following: elastomeric fitted pump, flooded suction, water at ambient conditions. The use of other materials and varying hydraulic conditions may result in deviations in excess of 5%.



# Dimensional Drawings:

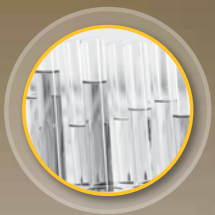
## E1 Metallic Bolted



|   | ALUMINUM    | STAINLESS STEEL ALLOY "C" |
|---|-------------|---------------------------|
| A | 1.52 [39]   | 1.65 [42]                 |
| B | 11.78 [299] | 11.90 [302]               |
| C | 13.57 [345] | 13.73 [349]               |
| D | 8.27 [218]  | 8.35 [212]                |

Dimensions in Inches [mm]  
Tolerance: ±1/8" [± 3mm]

## Industries & Applications



### Chemical

Drum transfer,  
chemical injection,  
chemical batching



### Lubrication

Dispensing of oil,  
windshield solvent,  
transmission fluid,  
and antifreeze



### Printing

Ink dispensing,  
apply glue



**VERSA-MATIC®**  
Warren Rupp, Inc.  
A Unit of IDEX Corporation  
800 North Main Street  
Mansfield, OH 44902 USA

Phone: 419.526.7296  
Fax: 419.526.7289  
[versamatic.com](http://www.versamatic.com)



**Distributed By:**

©Copyright 2016 Warren Rupp, Inc. All Rights Reserved.

VM\_E1 MetallicBro-rev0416