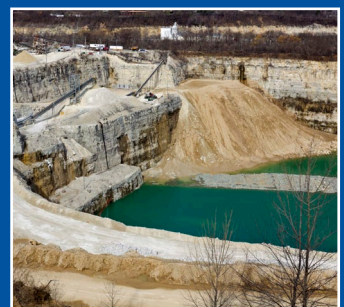


N^{PC} NATIONAL PUMP COMPANY
A GORMAN-RUPP COMPANY

The Pump People

VERTICAL TURBINE PUMPS

OIL & GAS
INDUSTRIAL

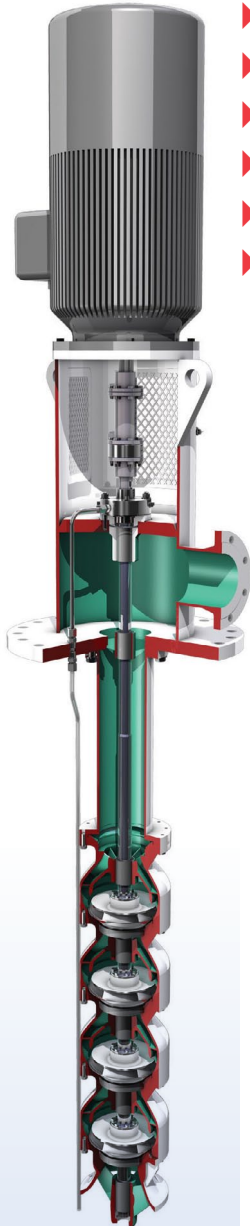


PERFORMANCE | QUALITY | SERVICE | TRUST



Submersible
VS0

- ▶ Off Shore Platform
- ▶ Seawater Lift
- ▶ Deep Well Dewatering
- ▶ Fire Protection



Wet Pit
VS1

- ▶ Sump Type / Wet Pit
- ▶ Crude Oil Transfer
- ▶ Storm / Waste Water
- ▶ Secondary Recovery
- ▶ Cooling Water
- ▶ Aircraft Fueling



Canned Booster
VS6

- ▶ Pipeline Booster
- ▶ Light Hydrocarbon,
High-Vapor Pressure
(Low NPSHA)
- ▶ LNG Transfer
- ▶ Refinery Service
- ▶ Vertical Process

API 610 Compliant Designs



Capabilities and Materials

National Pump Company is recognized as a dependable manufacturer of Vertical Turbine API 610 type pumps for the oil & gas and mining markets. Pumps can be manufactured in a variety of design and material configurations to suit your application, budget and timeline, for many years of dependable and efficient operation.

MATERIAL CLASS	BOWLS	IMPELLERS	BOWL WEAR RINGS	IMPELLER WEAR RINGS	SHAFTING	DISCHARGE HEAD/ SUCTION CAN	COLUMN BOWL SHAFT BUSHINGS	BOLTS
I-1	Cast Iron	Cast Iron	Cast Iron	416 SS	416 SS	Cast Iron/ Carbon Steel	Nitrile Butadiene	Carbon Steel
I-2	Bronze	Bronze	Bronze	Bronze	416 SS	Cast Iron/ Carbon Steel	Bronze	Carbon Steel
S-1	Cast Iron	Ductile Iron	Cast Iron	416 SS	416 SS	Carbon Steel	Filled Carbon	Carbon Steel
S-4	Cast Iron	Carbon Steel	Cast Iron	416 SS	416 SS	Carbon Steel	Filled Carbon	Carbon Steel
S-5	Carbon Steel	Carbon Steel	12% CR Hardened	12% CR Hardened	416 SS	Carbon Steel	Filled Carbon	316 AUS
S-6	12% CR	12% CR	12% CR Hardened	12% CR Hardened	416 SS	Carbon Steel	Filled Carbon	316 AUS
S-8	316 AUS	316 AUS	Hard-faced 316 AUS	Hard-faced 316 AUS	316 SS	Carbon Steel	Filled Carbon	316 AUS
S-9	Ni-Cu Alloy	Ni-Cu Alloy	Ni-Cu Alloy	Ni-Cu Alloy	Ni-Cu Alloy	Carbon Steel	Filled Carbon	Ni-Cu Alloy
C-6	12% CR	12% CR	12% CR Hardened	12% CR Hardened	12% CR	AUS	Filled Carbon	316 AUS
A-7	AUS	AUS	Hard-faced AUS	Hard-faced AUS	AUS	AUS	Filled Carbon	316 AUS
A-8	316 AUS	316 AUS	Hard-faced AUS	Hard-faced AUS	316 AUS	316 AUS	Filled Carbon	316 AUS
D-1	Duplex	Duplex	Hard-faced Duplex	Hard-faced Duplex	Duplex	Duplex	Filled Carbon	Duplex
D-2	Super Duplex	Super Duplex	Hard-faced Duplex	Hard-faced Super Duplex	Super Duplex	Super Duplex	Filled Carbon	Super Duplex

*Abbreviations are as follows: SS – Stainless Steel; CR – Chrome Steel; AUS – Austenitic SS; Ni-Cu Alloy – Monel types; Duplex – Duplex SS; Super Duplex – Super Duplex SS



Delivering Vertical Turbine Pump
Reliability, Quality and Service
Since 1969

Creating Quality Pump Systems and Satisfied Customers

Visit us on the web at: www.nationalpumpcompany.com

ARIZONA (Main Office)

7706 N. 71st Ave. • Glendale, AZ 85303-1703
(623) 979-3560 • Fax (623) 979-2177
(800) 966-5240



GEORGIA

902 East Union St. • Vienna, GA 31092
(229) 268-2921 • Fax (229) 268-7136
(800) 741-2921

CALIFORNIA

2830 E. San Antonio Dr. • Fowler, CA 93625
(559) 497-5071 • Fax (559) 497-8816
(800) 868-9755

MISSISSIPPI

11176 Green Valley Dr. • Olive Branch, MS 38654
(662) 895-1110 • Fax (662) 895-5083
(866) 668-4914

FLORIDA

195 E. 3rd Street • Zolfo Springs, FL 33890
(863) 735-8222 • Fax (863) 735-8202
(800) 994-3045

TEXAS

3107 Slaton Highway • Lubbock, TX 79404
(806) 745-5396 • Fax (806) 745-6668
(800) 745-5393



Proud member of American Petroleum Institute and these organizations:

